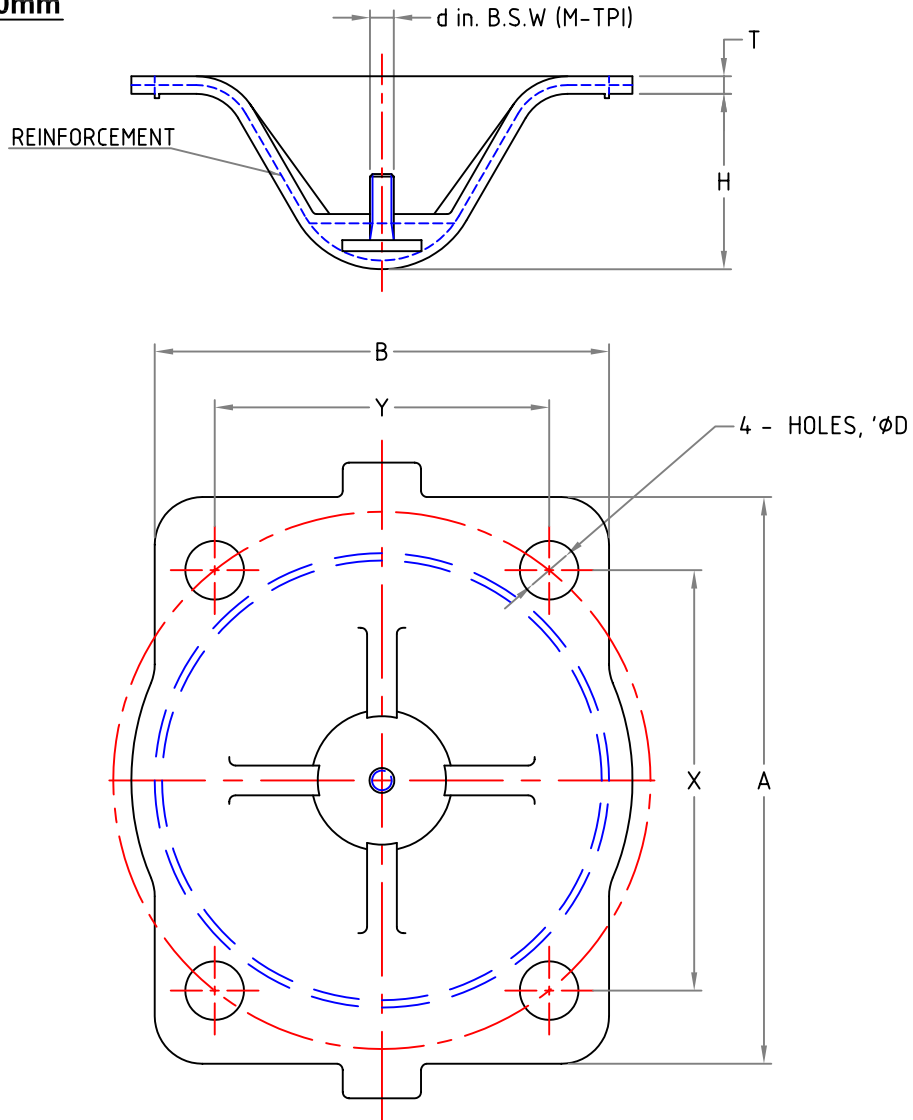


**SIZE : 15mm TO 80mm**



**MATERIAL :** Diaphragm : Natural Rubber, Black Butyl, Hypalon, Neoprene, Buna -N (Nitrile), Ethylene Propylene Rubber, White Natural

Stud : STEEL - IS 1367 Gr.8.8

| Nominal Size | Dimensions |       |      |       |     |     |     |      |       | QTY |
|--------------|------------|-------|------|-------|-----|-----|-----|------|-------|-----|
|              | X          | Y     | φD   | d     | A   | B   | T   | H    | M-TPI |     |
| 15           | 54.0       | 30.2  | 6.7  | 3/16" | 69  | 46  | 4.0 | 20   | 24    |     |
| 25 - 40      | 63.5       | 50.8  | 8    | 1/4"  | 88  | 69  | 5.0 | 31   | 20    |     |
| 50           | 85.7       | 63.5  | 11.1 |       | 114 | 89  |     | 42   |       |     |
| 65           | 101.6      | 82.6  | 12.7 | 5/16" | 140 | 112 | 4.0 | 58   | 18    |     |
| 80           | 133.4      | 101.6 | 17.5 | 3/8"  | 172 | 137 | 6.5 | 65.5 | 16    |     |

NOTE : DIMENSIONS ARE ONLY INDICATIVE AND VARIES FROM MATERIAL TO MATERIAL IN MOULDING PROCESS DUE TO SRINKAGE ALLOWANCE.

CUSTOMER \_\_\_\_\_  
 ORDER NO. \_\_\_\_\_  
 JOB/PROJECT \_\_\_\_\_

**MANUFACTURED BY : B.D.K. ENGINEERING INDUSTRIES LIMITED, HUBLI - 580 030**

APPROVED :

CHECKED :

DRAWN :

FOR RECORD

FOR APPROVAL